



JERSEY WATER WORKS MEASUREMENT SYSTEM

ARE WE MAKING PROGRESS?

The purpose of Jersey Water works is to transform New Jersey's inadequate water infrastructure by investing in sustainable cost-effective solutions that provide communities with clean water and waterways; healthier, safer neighborhoods; local jobs; flood and climate resilience; and economic growth.

DECODING THE SYSTEM:



GOALS AND SUBGOAL:
What we are working to achieve



INDICATOR:
What we will measure to track progress



BY 2020:
What we want to see by 2020



EFFECTIVE GREEN AND GRAY INFRASTRUCTURE

Increase use of green infrastructure, reduce flooding, and deliver quality water services

Installing Green Infrastructure (GI)



INDICATORS:

- Number of GI projects and area served by GI projects
- Amount of stormwater treated by GI

BY 2020:

- The ability to track the number and stormwater management capacity of GI projects
- A significant increase in GI projects

Reducing Flooding



INDICATORS:

- Number, location and severity of localized street and property flooding

BY 2020:

- Public reporting by utilities, local and state governments about street and property flooding

Maintaining Pipes



INDICATORS:

- Amount of treated drinking water lost
- Amount of sewage increased due to infiltration of groundwater
- Trends in pipeline breaks per mile

BY 2020:

- Minimum standards set for acceptable water loss and infiltration/inflow
- Data tracking system established
- Reduction in water losses and infiltration/inflow



SMART COMBINED SEWER OVERFLOW (CSO) PLANS

Include cost-effective solutions that provide community benefits and meet or exceed permit requirements

Balancing Pipes and Parks



INDICATORS:

- The planned reduction of CSOs (both the number and size of events) that are due to green infrastructure

BY 2020:

- CSO plans include a significant use of green infrastructure projects to achieve overflow reductions

Reducing Combined Sewer Flows



INDICATORS:

- The planned reduction in sewer flows that need to be managed

BY 2020:

- CSO plans have clear and measurable actions to reduce sewer flows by managing water use and inflow and infiltration

Serving Host Communities



INDICATORS: Impact of planned upgrades on:

- Property values, air temperature and green space
- Water-borne illness rates and other health risks
- Local jobs related to GI

BY 2020: CSO plans invest in:

- Green projects that also improve neighborhoods
- Reducing or eliminating sewer backups
- Use of local labor



FINANCIALLY SUSTAINABLE & AFFORDABLE SYSTEMS

That operate efficiently and remain in a state of good repair

Wise Management and Spending



INDICATORS:

- Asset management plans
- Capital budgets and spending for the plan

BY 2020:

- Asset management plans exist and reported on
- Yearly investments match planned upgrades

Affordable Combined Sewer Overflow (CSO) Solutions



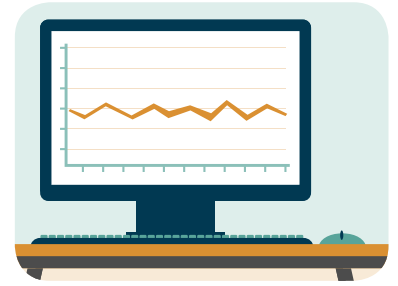
INDICATORS:

- Water and sewer bills relative to household incomes
- Annual cost per volume of CSO programs

BY 2020: Utilities will:

- Keep household rates affordable for all
- Focus on cost-effective and long-term CSO solutions

Adequate and Fair Revenue



INDICATORS:

- Utility rates and reserves relative to costs
- Multi-year rate planning

BY 2020:

- Utility rates represent full-cost pricing
- Rate changes are preplanned and avoid major shocks



EMPOWERED STAKEHOLDERS

Participate actively and influence the planning and management of their water infrastructure

Educated Stakeholders



INDICATORS:

- Documented increase of knowledge by decision makers and community stakeholders

BY 2020:

- Decision makers, influencers and community stakeholders understand key concepts and issues.

Engaged Communities



INDICATORS:

- Increase in quality and quantity of stakeholder engagement in planning and implementing sound water systems
- CSO Supplemental Teams membership and activity

BY 2020:

- Community stakeholders' voices are heard and considered in decision-making
- Community members practice water conservation

Holistic Water Systems



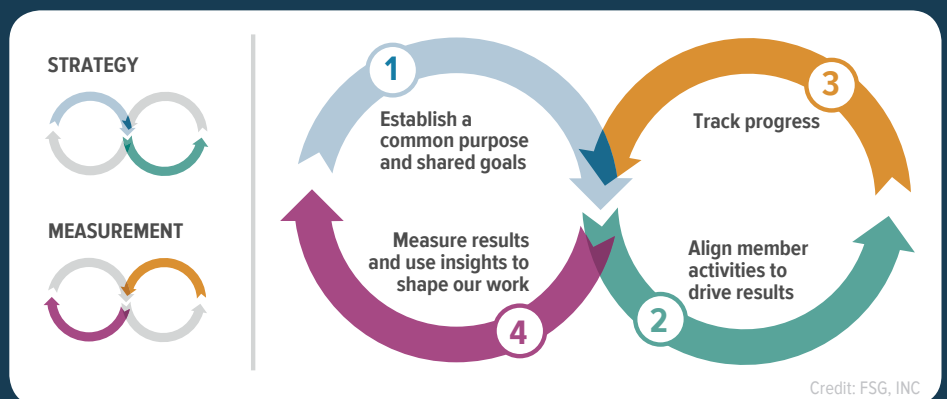
INDICATORS:

- Provisions in municipal plans, programs and ordinances for water-related issues
- Capital projects' provisions for water issues

BY 2020:

- Water is a core consideration in local plans, ordinances, and programs

In 2015 Jersey Water Works established four goals and twelve sub-goals to focus its activities through 2020. In 2016 the collaborative proposed an aspirational measurement system to track its progress in accomplishing those goals. The system is designed to provide feedback to Jersey Water Works members and committees about where its strategies are succeeding and where they need refinement. Next, the collaborative will set up tracking systems, modify the system as needed, establish a baseline and share data.



Credit: FSG, INC